



# Assembly B22

ASSEMBLY GUIDE

## SHOWROOM

—

Parchment House  
13 Northburgh Street  
London EC1V 0JP

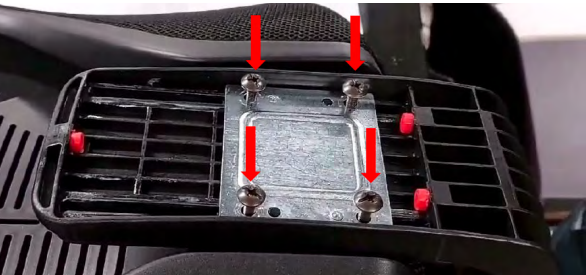
## CONTACT

—

[info@workstories.com](mailto:info@workstories.com)  
+44 (0)20 3735 5224  
[workstories.com](http://workstories.com)



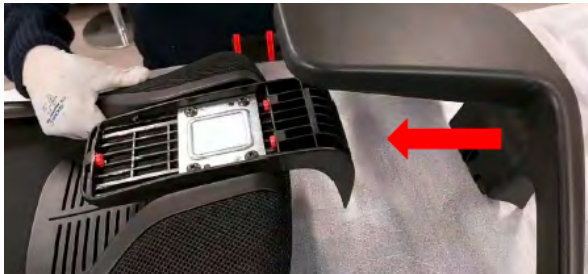
**01**  
Position the height adjustment system in the housing on the backrest



**02**  
Tighten the 4 VTM0640BPCFBL screws  
Recommended tightening torque 5N/m

**03**  
Place the entire back and the J bar on a work bench as shown

**04**  
Align the upper part of the insert with the J bar housing and fit them together



**05**  
Turn the J-bar downwards, as shown in diagrams A and B, until the 2 parts are almost parallel to each other



**06**  
Turn the back with the mesh facing upwards

**07**  
Use the palm of the hand to firmly press the lower part of the back downwards until the 2 connectors on the height adjustment system click into place



**08**  
Visually check that the connectors have clicked into place properly



**09**  
Secure both parts with a M6x20mm screw (VTM0620PSBFZL)



**10**  
Tighten the screw using a hex key  
Recommended tightening torque 4N/m





11

Secure the seat plate to the seat pad: fit the 2 rear lugs on the seat plate to the inside of the seat and secure the 7 5x16mm VTM0516BPCFB screws as shown



12

Secure the remaining screws

13

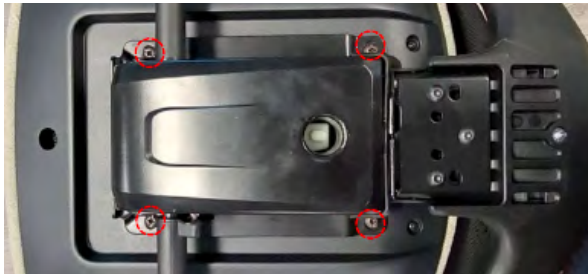
Place the mechanism on the lower part of the seat complete with the pad and seat plate – Fixed mechanism on rear holes as shown in diagram; Movement mechanism on front holes

14

Use 4 M6x20mm screws (VTM0620BPBFB)

15

Tighten the screws using a screwdriver. Recommended tightening torque 5N/m



16

Fit the back/J J-bar unit to the seat movement mechanism using 3 M8x25mm screws (VTM0825BPBNR). Recommended tightening torque 10N/m.



17

B22 has RIGHT and LEFT armrests. Before fitting the armrests make sure they are positioned correctly. The brackets on the armrests and J J-bar have the letters R for RIGHT and L for LEFT.

18

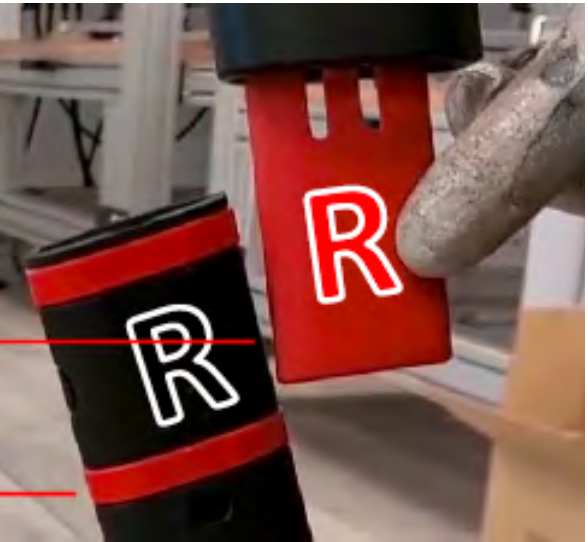
Fit the armrests with the letters towards the inside of the seat

19

Remove the red element from the casing by holding down the armrest button to facilitate assembly

20

Check that the retaining rings are in the J J-bar housing



21

Insert the armrest and press downwards as far as possible until the parts click together

22

Insert it carefully without damaging the retaining rings





23

.When the armrest is inserted correctly a red part is visible through the hole in the bracket

24

Check armrest operation by pushing the button under the pad



Note

The procedure is reversible  
1. Lift the armrest to the maximum height and hold it there  
2. Press the red lug which is now visible with a flat blade screwdriver, remove by pulling the armrest upwards.

