



Assembly N12

ASSEMBLY GUIDE

SHOWROOM

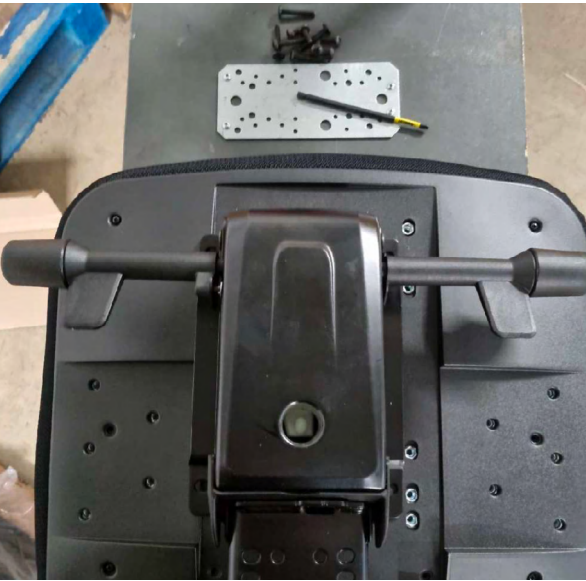
—

Parchment House
13 Northburgh Street
London EC1V 0JP

CONTACT

—

info@workstories.com
+44 (0)20 3735 5224
workstories.com



01
Take the seat part nr. (113305099NA)

02
Take the chair Mechanism part nr. (SYM05413D)

03
Place the mechanism on the seat and use the middle position inserts for seat fixing.



04
Use M6X20MM Bolts with part nr. (VTM0620BPCFB) 4 bolts and tighten them with PH3 drill bit.

05
Take the arms with part nr. (217015100N), comes in pairs, pay attention to look at the markings on the arms R -Right and L – Left

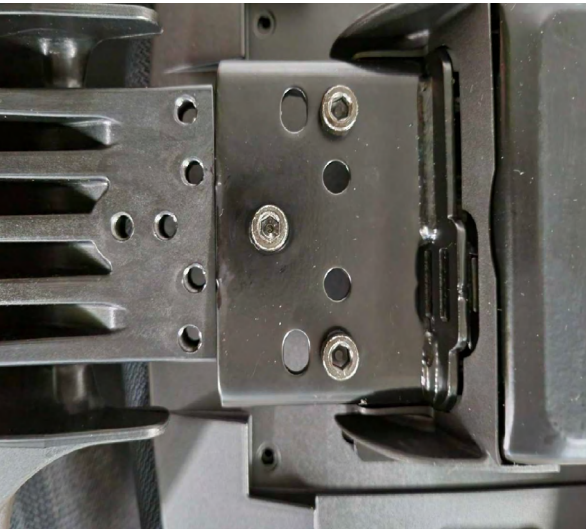


06
Use the right position fixing points for the arms.

07
Use M6X40mm PH3 head bolts to fix the arms. 3 bolts for each arm.

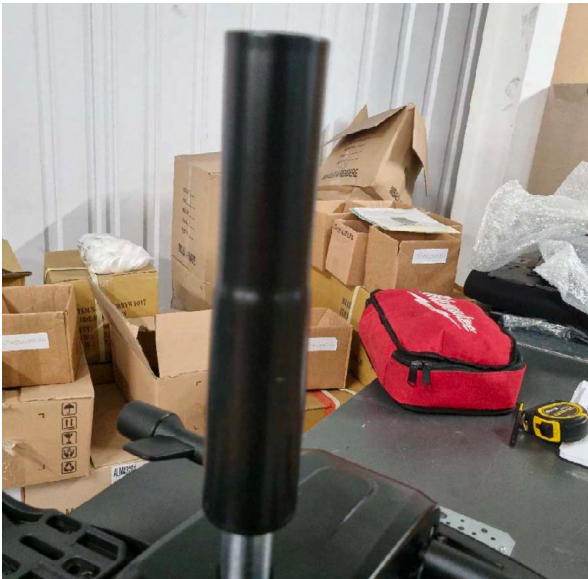


08
Take the back rest with part nr. (113106299NA)
*NOTE – M8X25mm bolts are from supplier supplied in each box of back. There should be a bag of 15 bolts in a full box of 5 backs. If you don't use all backs from the box, you have to leave needed number of back bolts with it!!Take the chair Mechanism part nr. (SYM05413D)



09

Make sure to use the right position of back fixing.



12

Take the gas lift part nr. (213002800F) and place it in the mechanism.

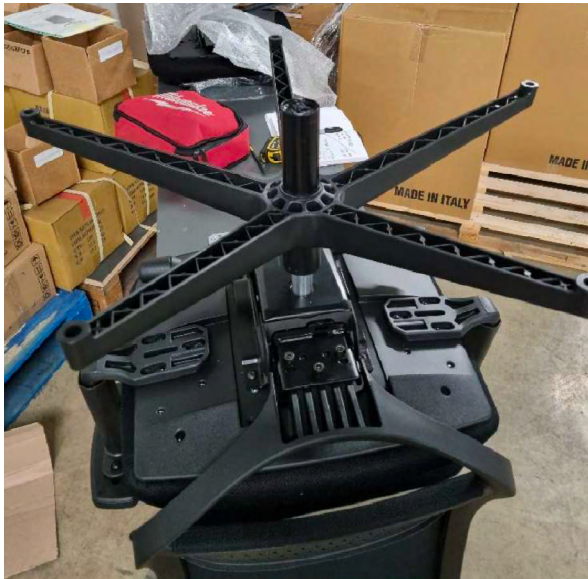
10

Tighten the back bolts with Impact driver on Setting 1 only.



13

Take the castors part nr. (112525023N3 or 112525455N3 which required by build order) and fit them on the star base (117044305N) and place it on the gas lift.



11

Due backs not having metal insert plates, thread for the bolts has been made straight in plastic back, overtightening will result in shredding the back thread and back will become faulty!



2025 Revision

Back bolts are M6X20MM same as used for mechanism, all Allen key head 4mm patched bolts. Arm bolts are M6X30MM Allen key head 4mm patched bolts.

